



Alusic

LIFTING COLUMNS



LINE AC, BH, IM, MC





Alusic

480K

metres of aluminium profiles in stock

8000

articles available for immediate delivery

business in

60

different countries world wide

4.0

management systems

300

aluminium structural profile molds

delivery in

1/3

the time

Alusic are leaders in industrial automation assembly systems and components, an achievement which was possible by always putting customers first.

CUTTING EDGE TECHNOLOGIES

- ◆ extrusion
- ◆ plastic and aluminium molding
- ◆ thermoforming
- ◆ mechanical processing
- ◆ lamination
- ◆ additive manufacturing
- ◆ pultrusion

OUR MAIN FIELDS

- ◆ industrial automation
- ◆ renewable energies
- ◆ healthcare and pharmaceutical
- ◆ experimental
- ◆ aerospace
- ◆ automotive

OUR SECTORS

- ◆ assembly systems
- ◆ handling and automation
- ◆ carbon/composite materials
- ◆ fluid distribution

Our main markets

ITALY
FRANCE
SPAIN
GREECE
TUNISIA
MOROCCO
CZECH REPUBLIC
POLAND
ROMANIA
NETHERLANDS
IRELAND
UNITED STATES
AUSTRALIA



BROAD RANGE OF PRODUCTS



WELL-STOCKED WAREHOUSES



DESIGN PLANNING AND MACHINING



DELIVERY IN 1/3 THE TIME

CONTACT US

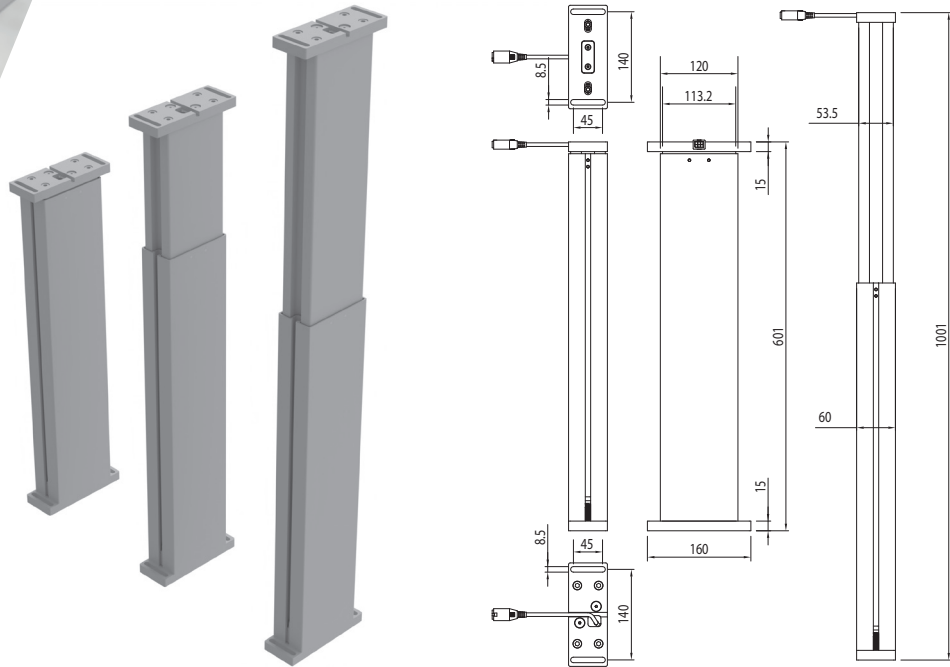
Scan this QR with your phone and fill the form to contact Alusic!



www.alusic.com



135.070.400.2

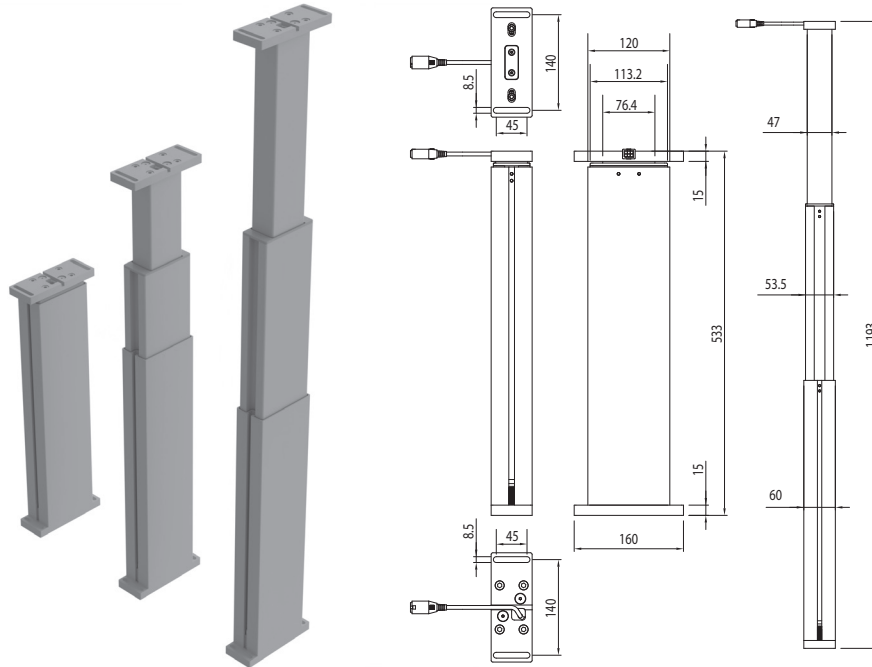


135.070.400.2 is a two-stage telescopic lifting column.
The outer stage is a 60x120 profile with 8 slots.

135.070.400.2 è una colonna di sollevamento telescopica a due stadi.
Lo stadio esterno è un profilo 60x120 con cave 8.

Maximum thrust force / Forza massima di spinta	700 N
Speed (no load) / Velocità (senza carico)	38 mm/s
Type / Tipologia	2-stage
Retracted length / Lunghezza retratta	601 mm
Stroke / Corsa	400 mm
Voltage / Voltaggio	18 V/DC
Maximum power / Potenza massima	180 W
Maximum current draw / Assorbimento massimo	10 A
Cable length / Lunghezza cavo	200 mm
Duty cycle / Ciclo di lavoro	10%
Operating temperature/ Temperatura di esercizio	+10 / +40 °C
Protection rating / Indice di protezione	fino a 54
Insulation class / Classe di isolamento	III
Weight / Peso	5,3 Kg
Integrated end stops / Fine corsa integrati	Yes

135.070.660.3



135.070.660.3 is a three-stage telescopic lifting column.
The outer stage is a 60x120 profile with 8 slots.

135.070.660.3 è una colonna di sollevamento telescopica a tre stadi.
Lo stadio esterno è un profilo 60x120 con cave 8.

Maximum thrust force / Forza massima di spinta	700 N
Speed (no load) / Velocità (senza carico)	38 mm/s
Type / Tipologia	3-stage
Retracted length / Lunghezza retratta	533 mm
Stroke / Corsa	660 mm
Voltage / Voltaggio	18 V/DC
Maximum power / Potenza massima	180 W
Maximum current draw / Assorbimento massimo	10 A
Cable length / Lunghezza cavo	200 mm
Duty cycle / Ciclo di lavoro	10%
Operating temperature / Temperatura di esercizio	+10 / +40 °C
Protection rating / Indice di protezione	fino a 54
Insulation class / Classe di isolamento	III
Weight / Peso	5,6 Kg
Integrated end stops / Fine corsa integrati	Yes



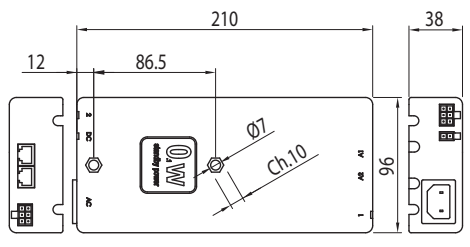
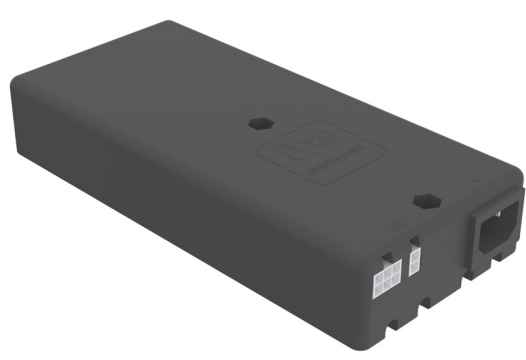


Control Units

Centraline

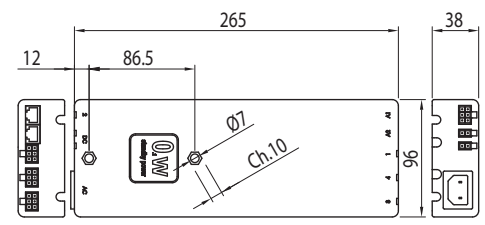
135.401.001

2 channels/canali | 230 V AC | 50 Hz | 400g
200W



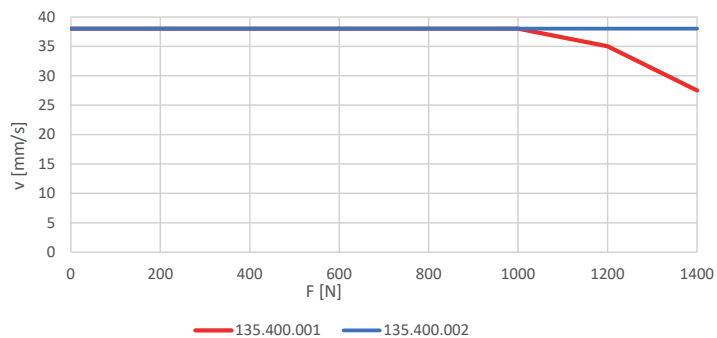
135.401.002

4 channels/canali | 100-240 V AC | 50-60 Hz | 500g
300W

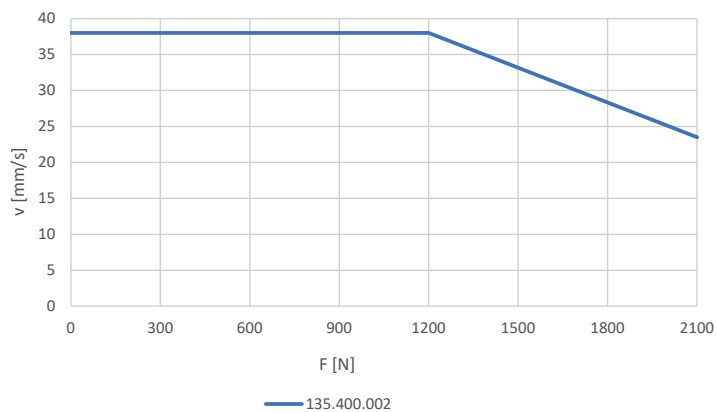


LOAD SPEED GRAPHS CONTROL UNITS
DIAGRAMMI VELOCITÀ SOLLEVAMENTO COLONNE

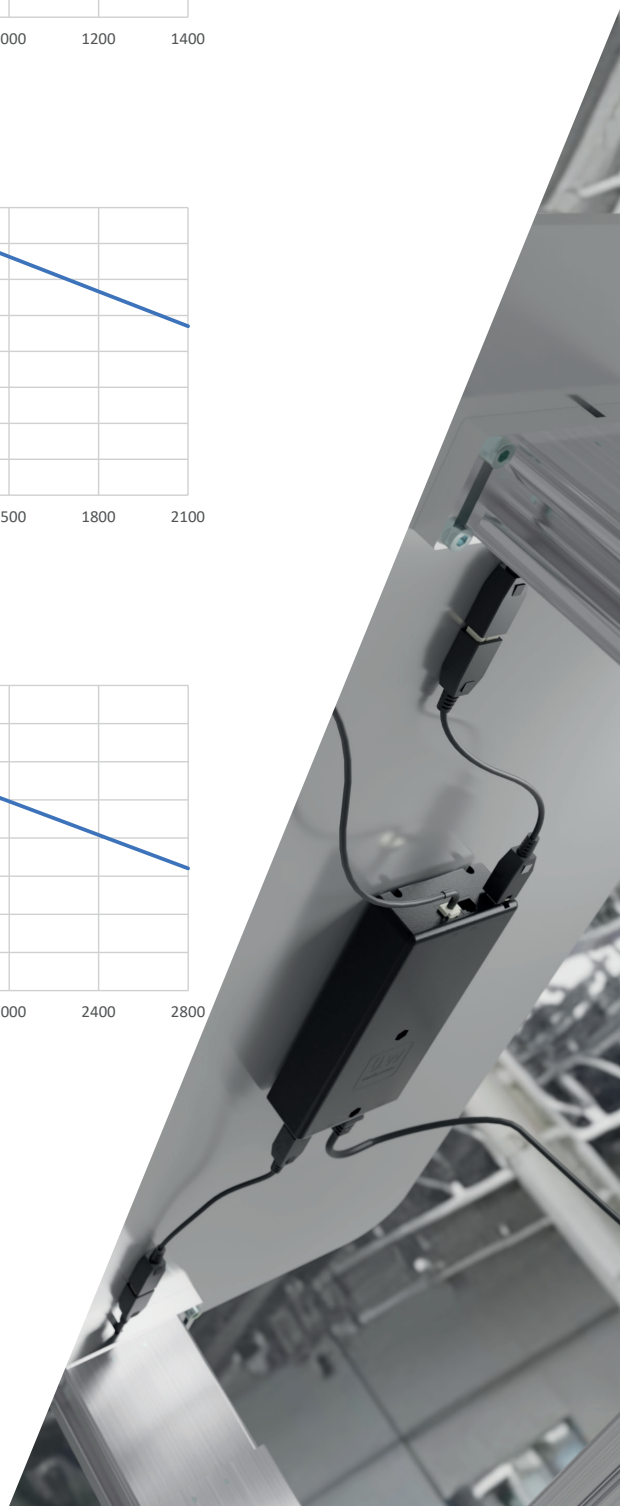
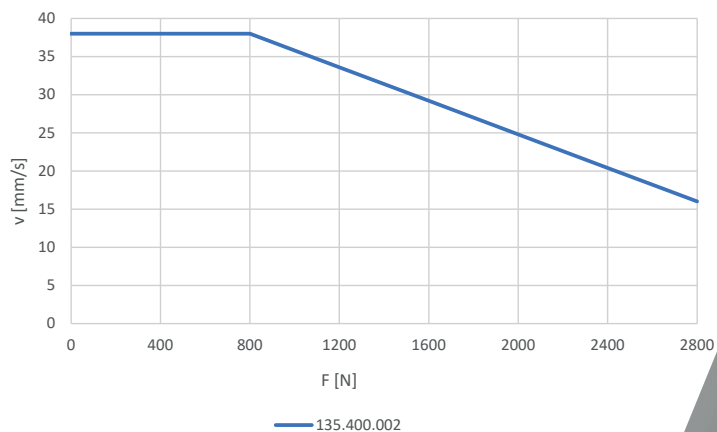
2x 135.070
 With 135.400.001 or 135.400.002
 Con 135.400.001 o 135.400.002



3x 135.070
 With 135.400.002
 Con 135.400.002



4x 135.070
 With 135.400.002
 Con 135.400.002



Accessories

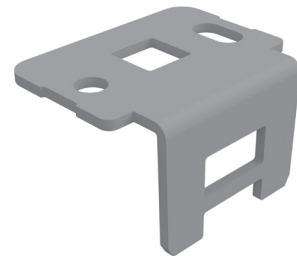
Accessori

CONTROL PANEL
PANNELLO DI CONTROLLO



135.401.101

Control panel
Pannello di controllo



135.401.102

Control panel mounting bracket
Staffa di fissaggio pannello di controllo

LINKING CABLES
CAVI DI COLLEGAMENTO



135.401.201.1000

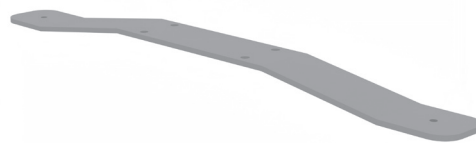
Motor cable
Cavo motore



135.401.202

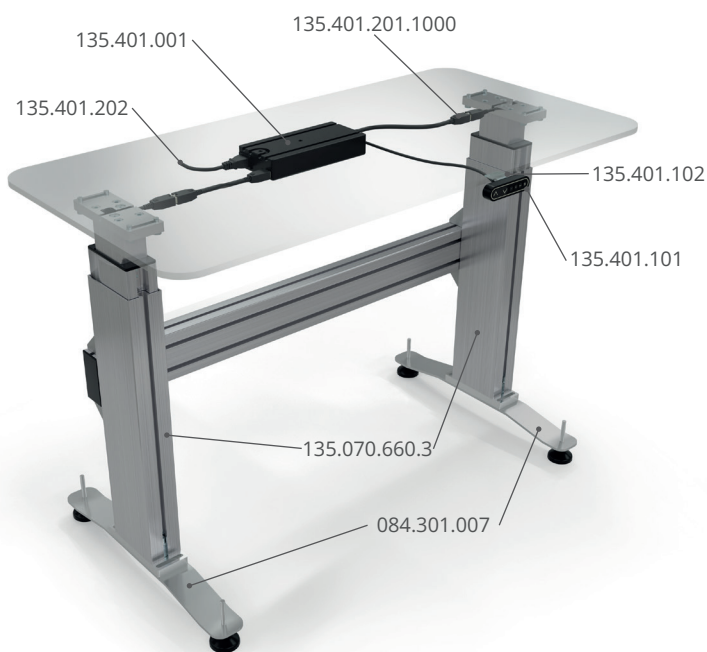
Power cable
Cavo alimentazione

BASE FOR COLUMNS
BASE PER COLONNE



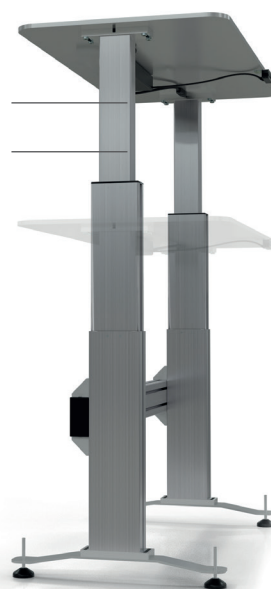
084.301.007

Base for lifting columns
Base per colonne di sollevamento



max height 1193mm
135.070.660.3
max height 1001mm
135.070.400.2

min height 601mm
135.070.660.3
min height 533mm
135.070.400.2



Height-adjustable workbench, with two three-stage telescopic columns. Complete with control panel and power supply
Piano di lavoro regolabile in altezza, con due colonne telescopiche a tre stadi. Completo di pulsantiera e alimentatore.

CONTROL PANEL FUNCTIONS

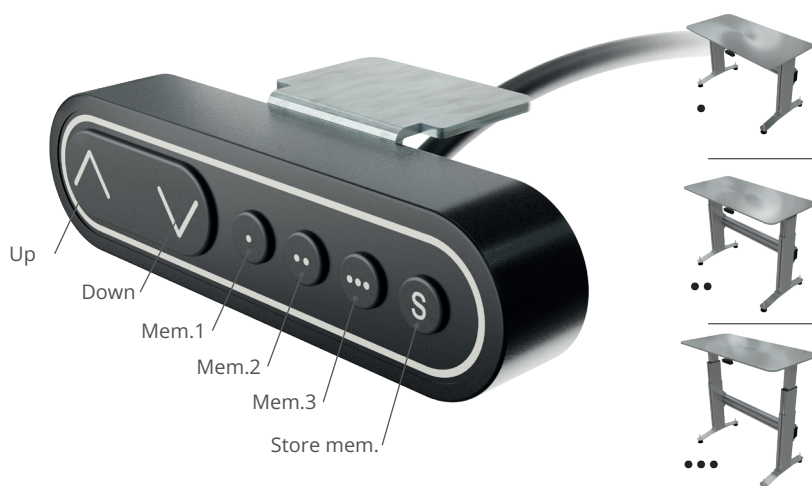
FUNZIONI DEL PANNELLO DI CONTROLLO

The control panel allows you to set the desired table height and save up to three positions

Il pannello di controllo permette di impostare l'altezza del piano desiderata e di memorizzare fino a tre posizioni.

To save a pre-programmed height, press the "S" button. Then, within the next two seconds, press one of the "Mem" buttons.

Per memorizzare un'altezza preprogrammata, premere il tasto "S". Poi, nei seguenti due secondi, uno dei tasti "Mem".



APPLICATION EXAMPLE
ESEMPIO APPLICATIVO



Workbench with 4 two-stage telescopic columns
Banco di lavoro con 4 colonne telescopiche a 2 stadi



Workbench with 4 three-stage telescopic columns
Banco di lavoro con 4 colonne telescopiche a 3 stadi





Via Bologna, 10/A - 12084 - Mondovì (CN) - ITALY
Tel.: (+39) 0174.55.29.49 - Fax: (+39) 0174.47.975 - Skype: sic.com
contact@alusic.com - www.alusic.com

